


Beyond Compare: Download & Installation for Windows (Students)

This article covers how CSUF students can download, install and activate Beyond Compare

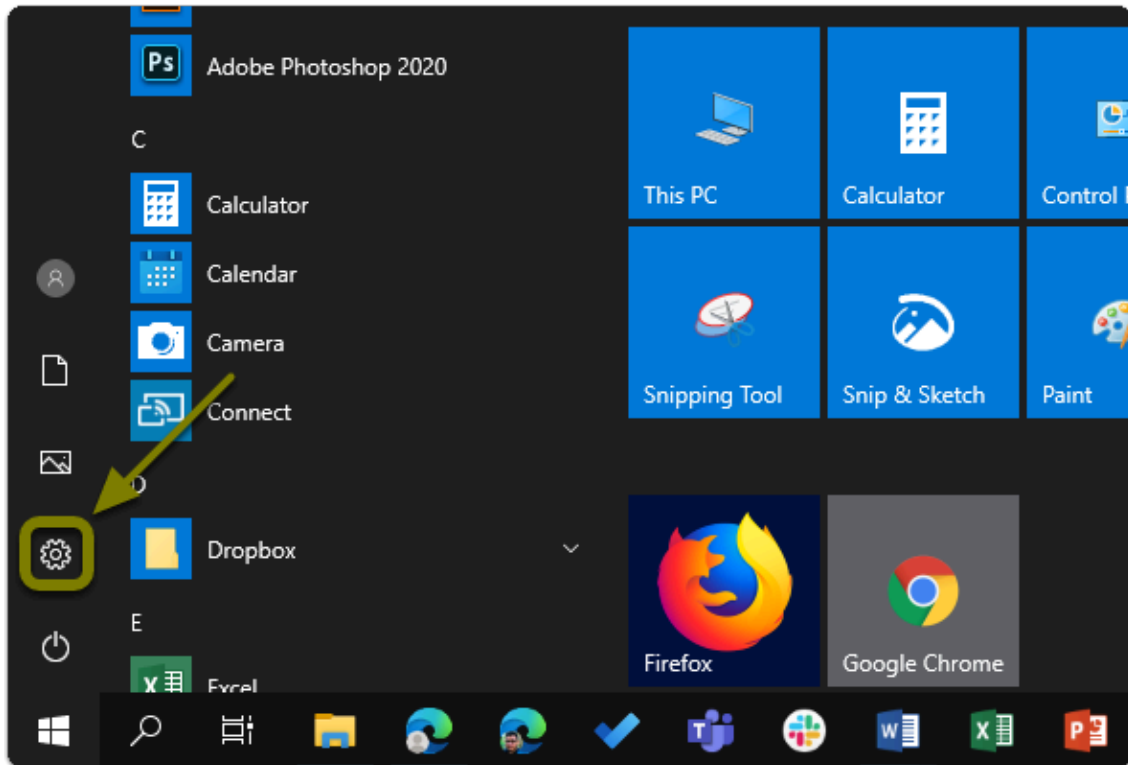
Step 1: Remove Previous Versions of Beyond Compare

-  If you do not have a previous version of Beyond Compare installed, proceed to [Get a Personal Beyond Compare License](#)

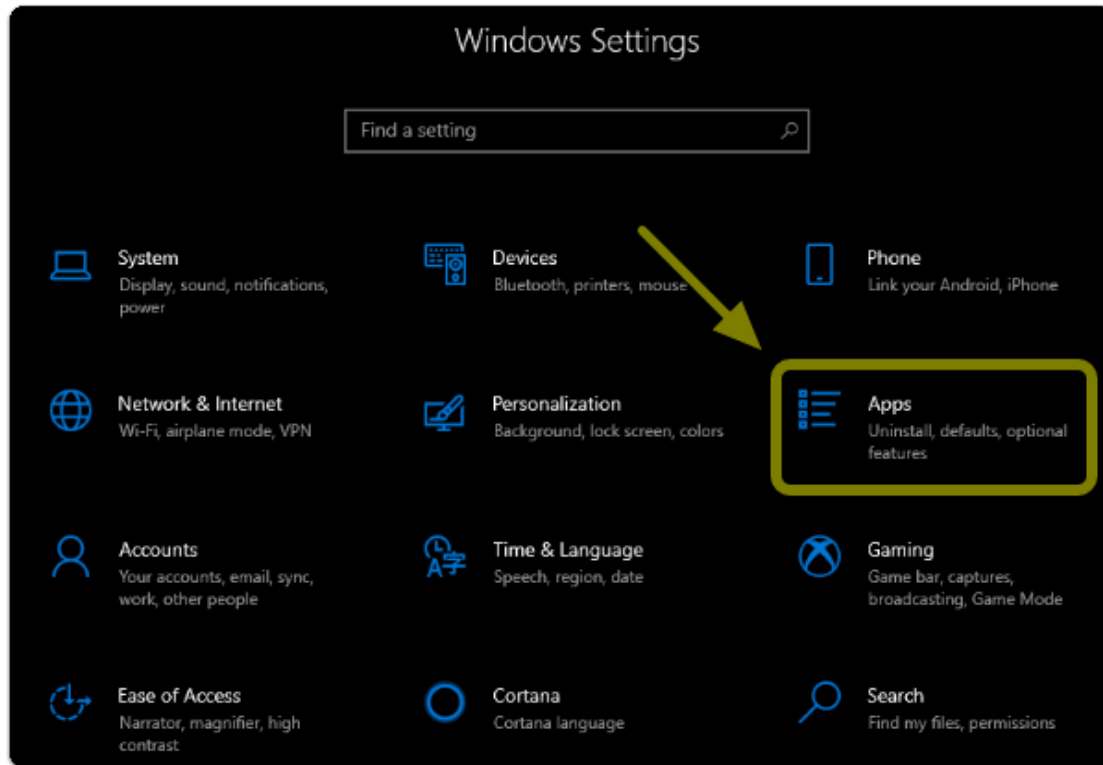
If you have an older version of Beyond Compare on your device, you will need to remove it before installing the newest version.

This will help avoid potential clashes between multiple versions.

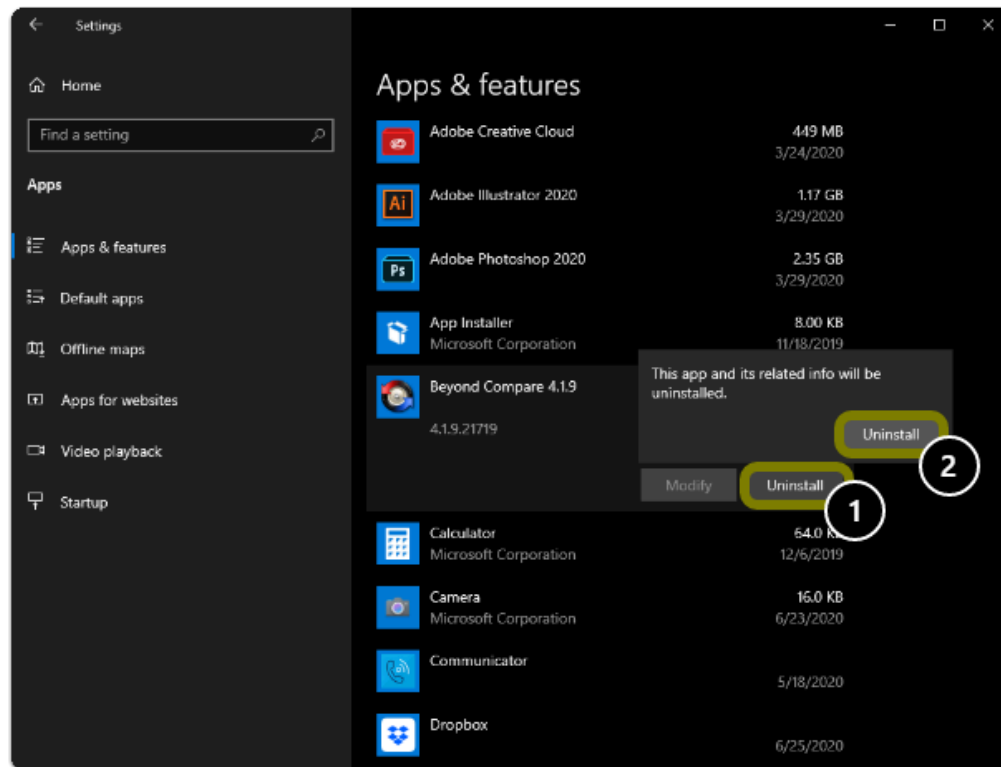
1. Open the Settings



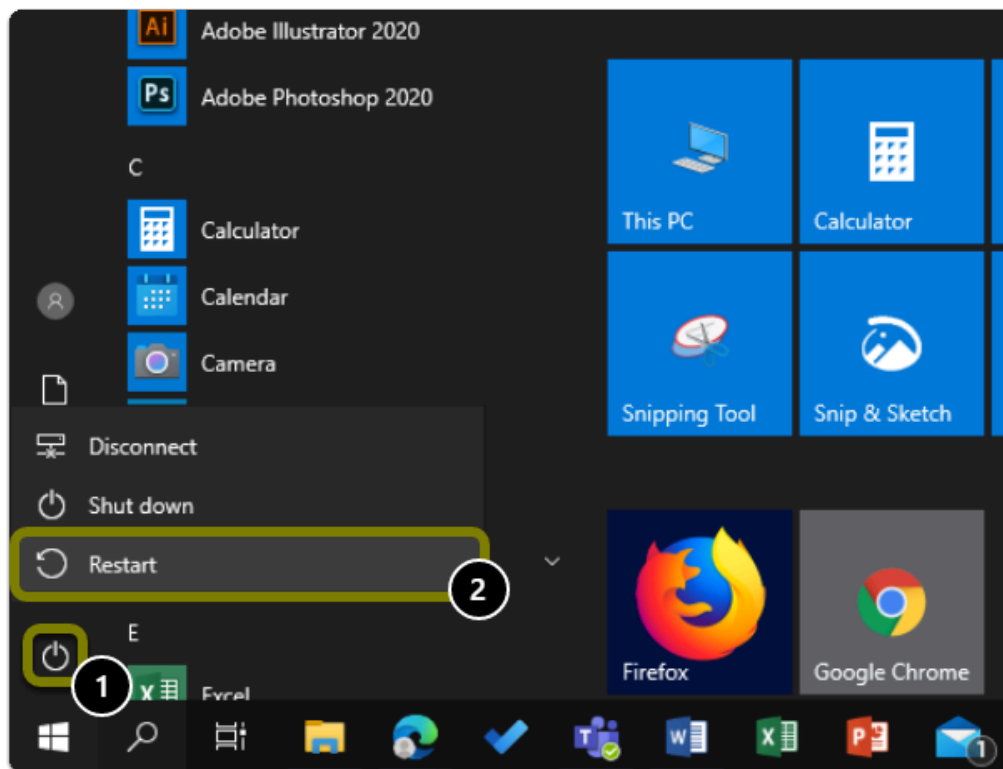
2. Click on Apps



3. Select Beyond Compare from the list and click uninstall twice



4. Restart your computer



Warning: You will need to restart your computer to complete the uninstall process.

Step 2: Get a Personal Beyond Compare License

1. Open your browser to the Beyond Compare Software Page and click "Get a Personal Beyond Compare License"

- a. Go to the [Beyond Compare Software Page](#)
- b. Click on "Get A Personal IBM SPSS License"

Beyond Compare

Each enrolled CSUF student is entitled to **ONE** license for **AT HOME USE**.

Beyond Compare allows you to quickly and easily compare your files and folders. By using simple, powerful commands you can focus on the differences you're interested in and ignore those you're not. You can then merge the changes, synchronize your files, and generate reports for your records.

You can get a **FREE** personal license through the CSUF e-licensing store and download and install Beyond Compare on your own computer. All personal licenses will expire on July 1st, 2017.

STEP 1:

[GET A PERSONAL BEYOND COMPARE LICENSE](#)

STEP 2:

[DOWNLOAD BEYOND COMPARE*](#)

***Note:** You are downloading the trial version that needs to be activated with the license key received in the previous step.

2. Login using your Portal Username & Password

Login to CSUF Portal

Username
tuffytitan

Password
.....

Login

Need help logging in?
DUO Two-Factor Authentication (2FA) is required to login.

First time students and applicants
Create my campus account

Alumni
Alumni click here

4. Read and accept the End User License Agreement (EULA) then click on "Get Beyond Compare License Key"

ent or encumbrance that conflicts with this Agreement; (b) the Software does not, to the best of Scooter Software's knowledge, infringe. Software is not contaminated by harmful code (e.g., self-propagating program instructions commonly called viruses, worms or Trojans).

GENERAL DISCLAIMER

for the limited warranties set forth herein, THE SOFTWARE AND DOCUMENTATION ARE PROVIDED "AS IS," TO THE MAXIMUM EXTENT PERMITTED BY LAW. SCOOTER SOFTWARE WILL BE LIMITED EXCLUSIVELY TO REFUND OF THE PURCHASE PRICE.

OTHER PROVISIONS


validity and interpretation of this Agreement shall be governed by the laws of the United States of America and the State of Wisconsin. SCOOTER SOFTWARE, INC. shall be the appropriate site of venue for actions relating to this Agreement, and hereby consents to the exclusive jurisdiction and venue of such court. If any provision of this Agreement is held to be invalid or unenforceable, such provision or part thereof will be severed from the Agreement and the remaining provisions will remain in full force and effect.

☒ By marking this check box, I represent that I have read, understood and agreed to the above End User License Agreement and that no EULA(s) have been made to me.


[Get Beyond Compare License Key](#)

--- BEGIN LICENSE KEY ---

--- END LICENSE KEY ---

 **Tip:** Save this serial number or keep this tab open, you will need it later to activate Beyond Compare

Step 3: Download the Software

 **Alert:** You are downloading the trial version that needs to be activated with the license key received in the previous step.

1. Open your browser to the Beyond Compare Software Page and

click "Download Beyond Compare"

- a. Go to the [Beyond Compare Software Page](#)
- b. Click on "Download Beyond Compare"

Beyond Compare

Each enrolled CSUF student is entitled to **ONE** license for **AT HOME USE**.

Beyond Compare allows you to quickly and easily compare your files and folders. By using simple, powerful commands you can focus on the differences you're interested in and ignore those you're not. You can then merge the changes, synchronize your files, and generate reports for your records.

You can get a **FREE** personal license through the CSUF e-licensing store and download and install Beyond Compare on your own computer. All personal licenses will expire on July 1st, 2017.

STEP 1:

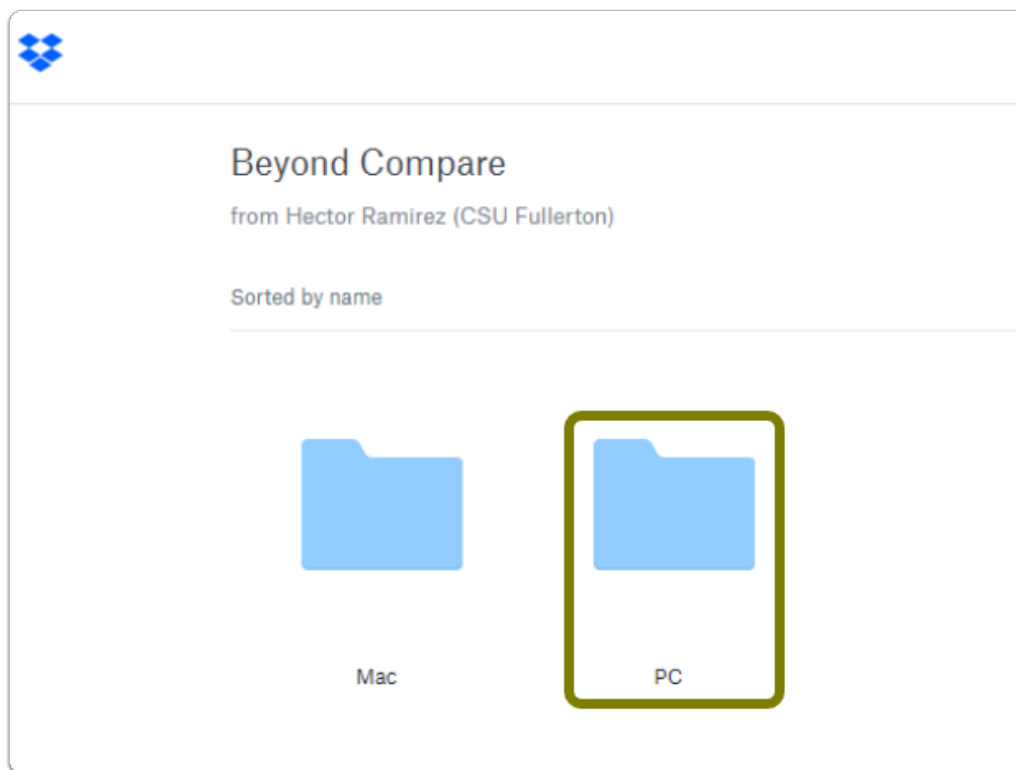
GET A PERSONAL BEYOND COMPARE LICENSE

STEP 2:

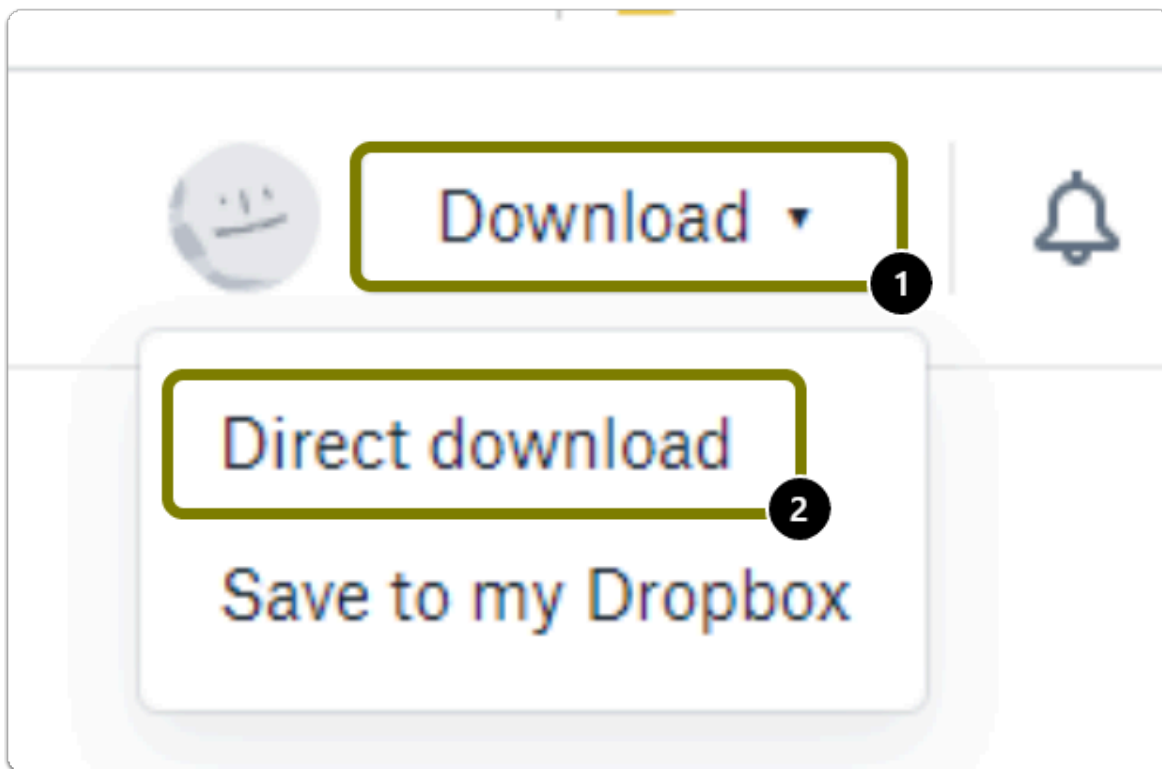
DOWNLOAD BEYOND COMPARE*

***Note:** You are downloading the trial version that needs to be activated with the license key received in the previous step.

2. Select the operating system that the software will be installed on. For this guide, click on PC (Windows)



3. Click on "Download" then "Direct Download"



Tip: The download button is located in the top right of the web page.



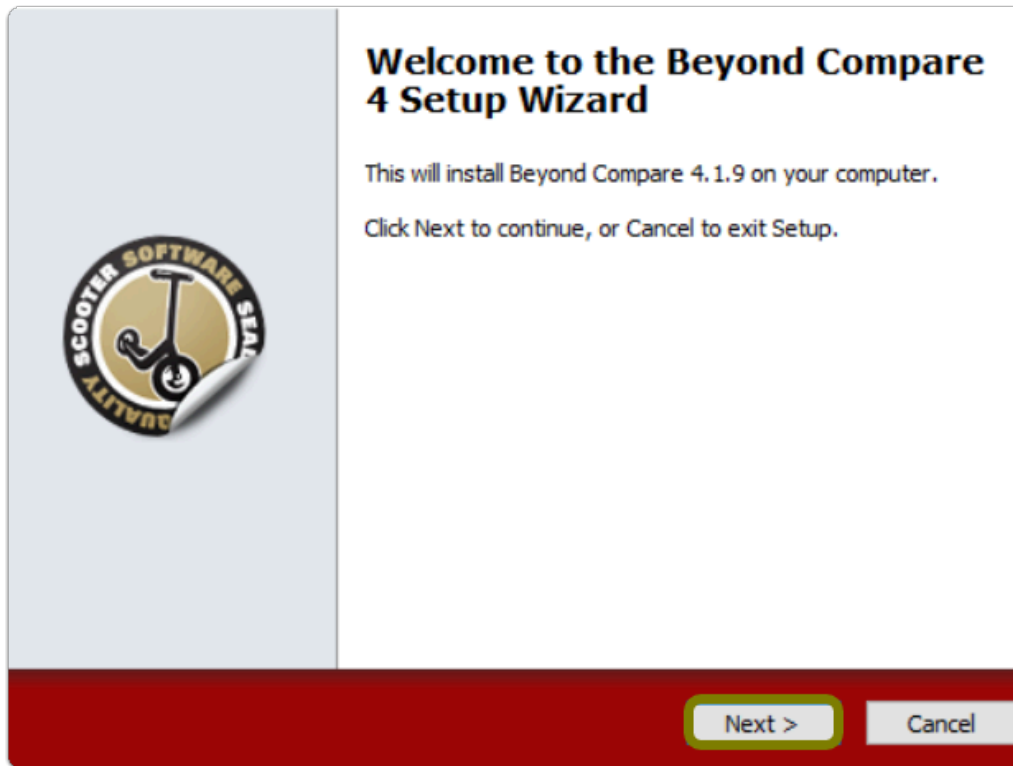
Warning: The file download time may vary based on the device and internet connection.



Alert: The Installation file will be saved to your computer as a .zip file.

Step 4: Install the Software

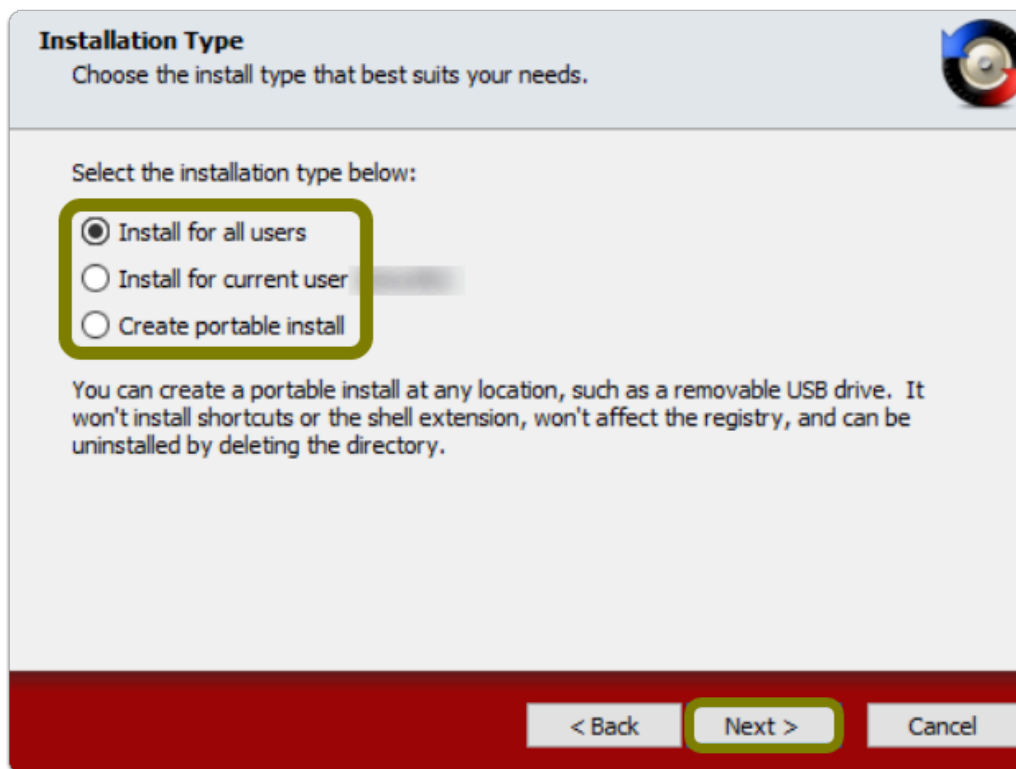
1. Open the installation file you downloaded, "Run" the file, and click Next>



i Note: The installation file should have gone to the "Downloads" folder by default, unless changed

2. Select your installation preference then click Next>

i Note: By default, it is set to "Install for all users"



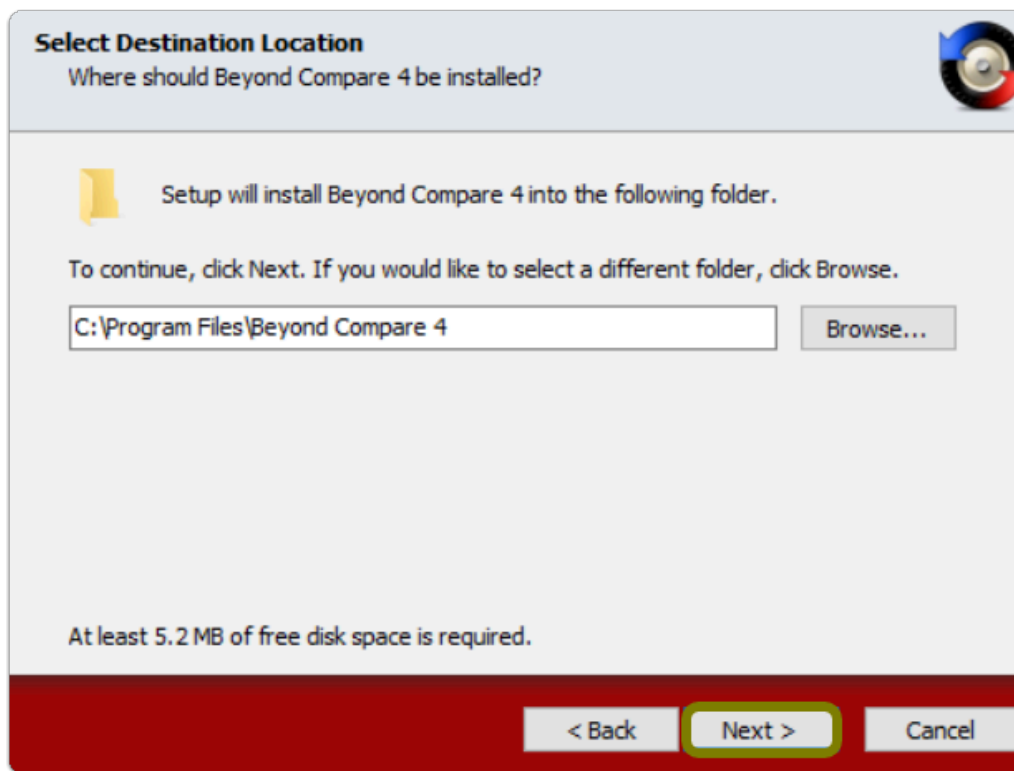
3. Select “I accept the agreement” to accept the terms of the End User License Agreement (EULA) then click Next>



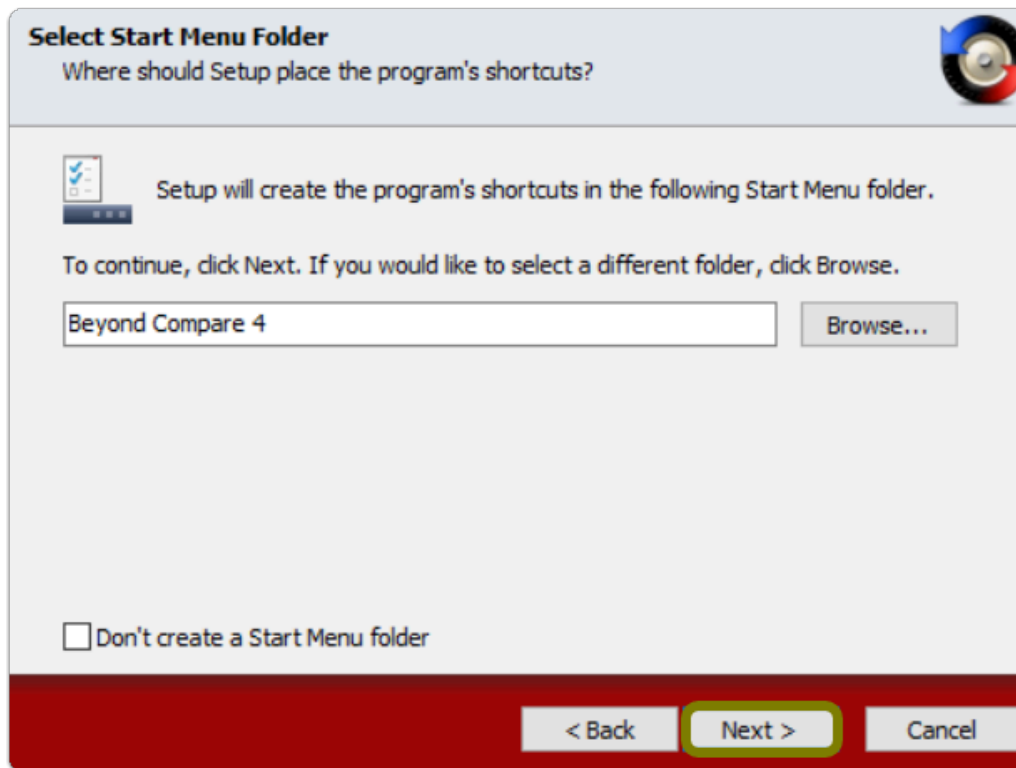
4. Optional: Set your installation path, then click Next>



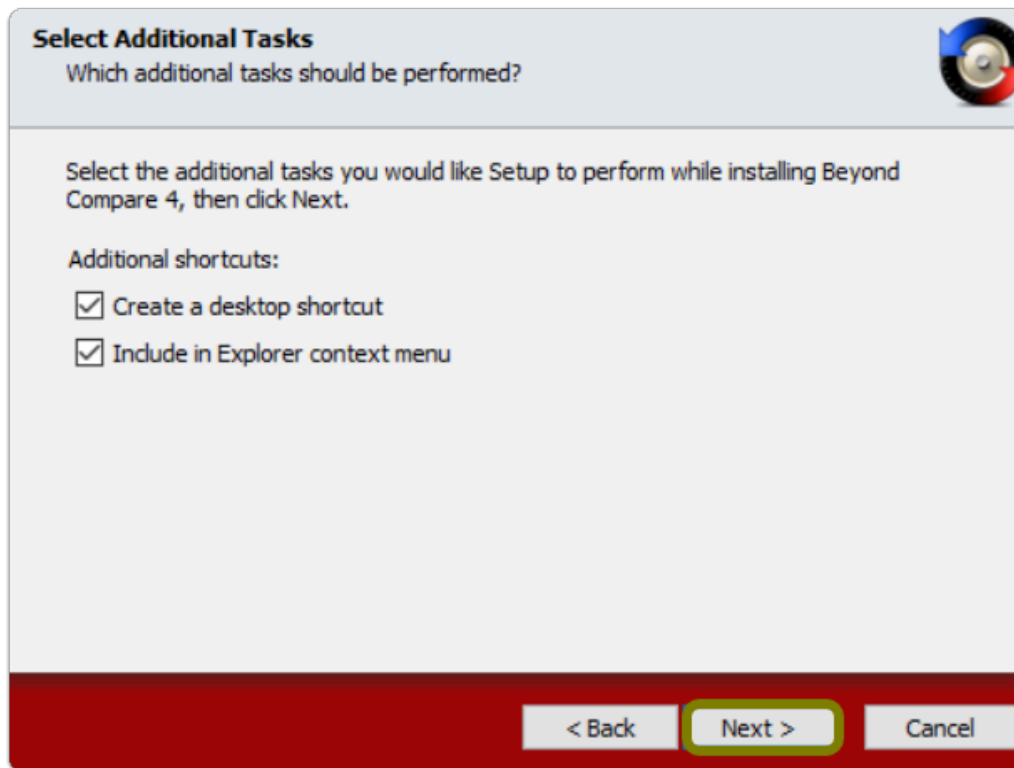
Tip: It is recommended you leave the default path



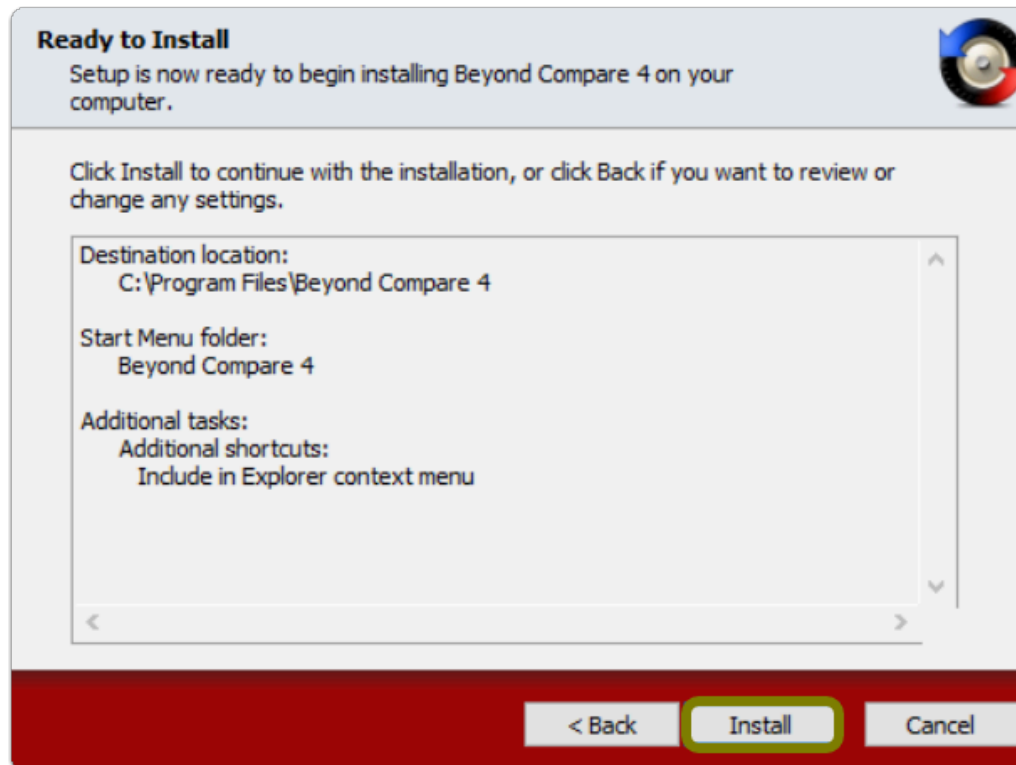
5. Optional: Configure your shortcuts in the Start Menu folder, then click Next>



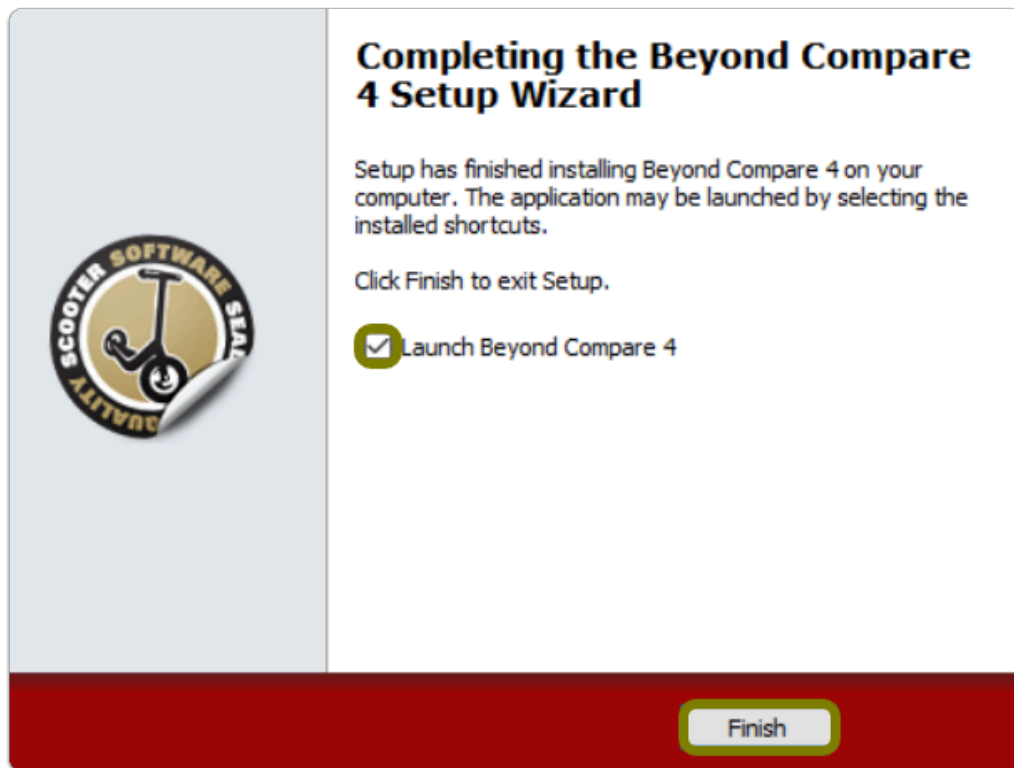
6. Optional: Configure your additional shortcuts for Beyond Compare



7. Click Install



8. Once installed, select "Launch Beyond Compare 4" then click Finish

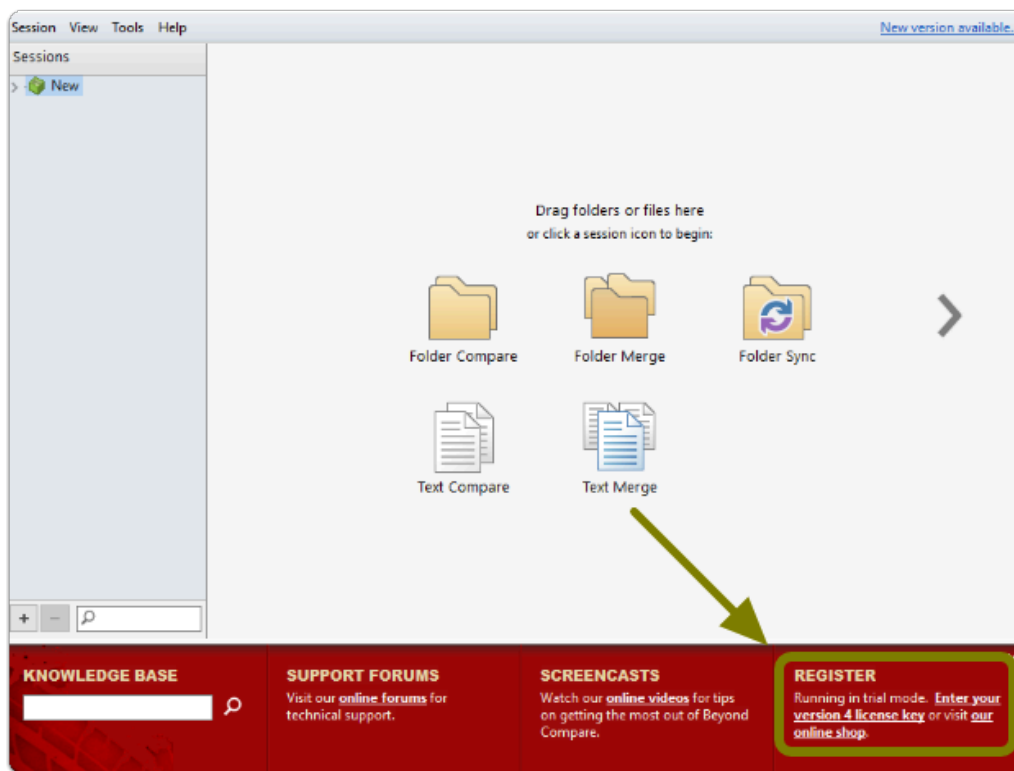


Step 5: Activate the Software

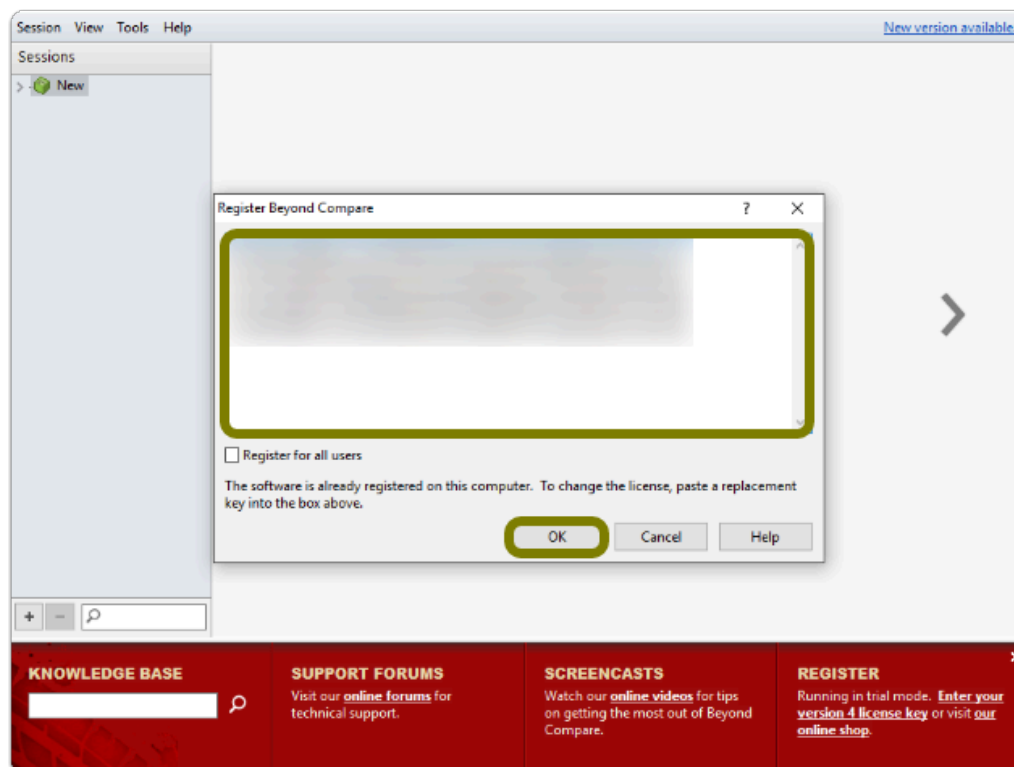
1. Launch Beyond Compare and click on "Enter your version 4 license key" on the bottom right corner of the app



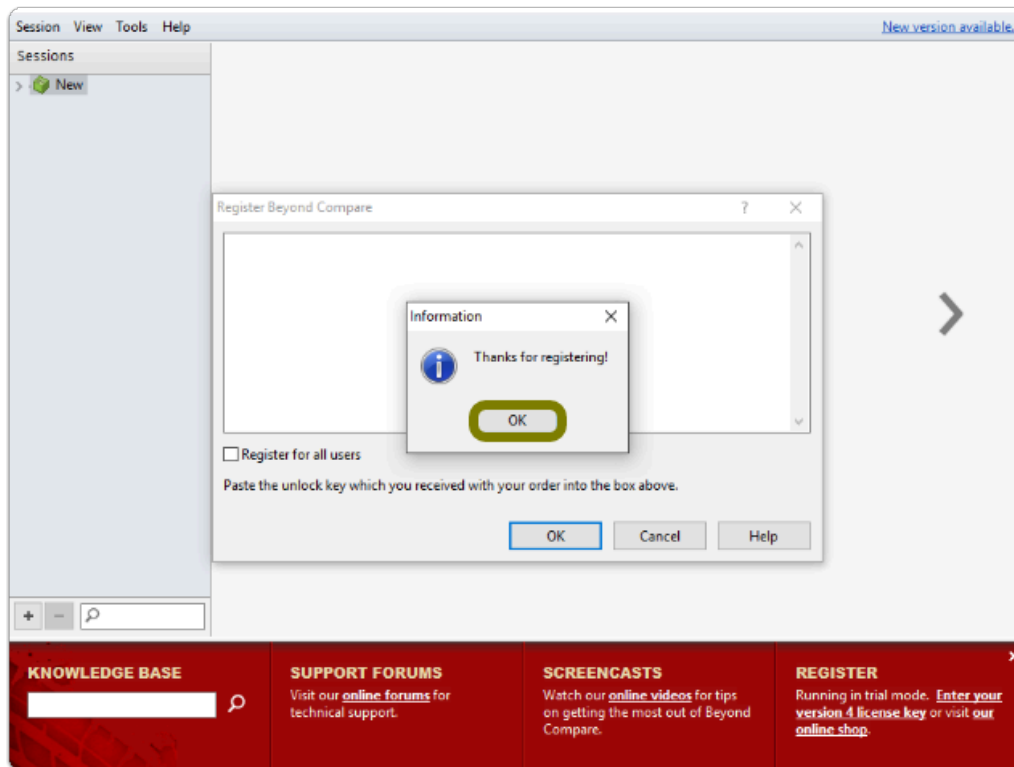
Tip: Your license key was provided in [Step 2](#)



2. Enter the license key that you previously obtained, then click OK



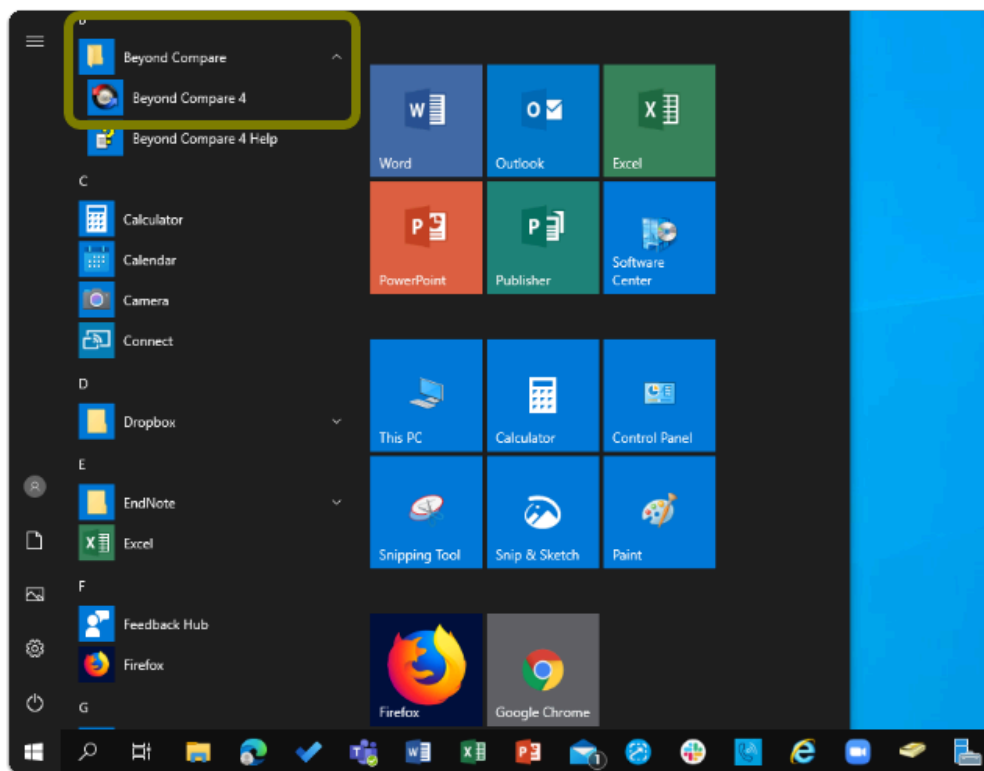
3. Note the "Thanks for registering!" information box, click OK



Beyond Compare is now Installed & Activated

Where is Beyond Compare Located?

- Select the **Start** Button (Apps will be in alphabetical order)
- Go to the **"B"** Section and you'll find a **"Beyond Compare"** Folder
- Open the folder to find **"Beyond Compare"**



Need help using Beyond Compare?

LinkedIn Learning is available to all currently enrolled CSUF Students

- Contains over 13,000 courses taught by real-world experts and a library that is constantly up-to-date

- **On the Student Portal, search for "LinkedIn Learning" to get started**

Need technical assistance?

Contact the Student IT Help Desk at (657) 278-8888 or StudentITHelpDesk@fullerton.edu

Visit the Student Genius Center on the first floor of the Pollak Library North. Go to the SGC website for walk-in hours: <http://sts.fullerton.edu/sgc>.

The Student IT Help Desk and Student Genius Center can assist with:

- Issues with obtaining the License Code
- Issues with installing Beyond Compare
- Issues with activating Beyond Compare